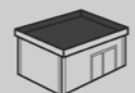


BISOL

BISOL EasyMount™ Slim BASE & Twin Slim BASE



Cost-effective & lightweight for hassle-free installations

This flat roof mounting solution portrays ease of mounting with high wind and snow resistance, together with an elegant look. The optimised packaging bundles ensure that all the components are ready for in-place install construction, with only basic mounting tools and no need for cutting. The system inclination is 10°, easily adopted to 20° or an east-west orientation by click snap-on elements.

0 – 2.4 kN/m²
(with BISOL PV modules)

0 – 150+ km/h
(93+ mph)

Why this mounting solution?

- ▶ Optimised **design** = less **material** = lower **price**
- ▶ Optimised **packaging**: less **components** & no **cutting**
- ▶ **Easy** installation & adaptation
- ▶ High **wind** and **snow** load resistance
- ▶ **Certified** design and materials
- ▶ No **roof drainage** interference



Individual components

Component	ID Code	Component description
1	SEK-BTP_1020	Bottom profile length 1020
2	SEK-BTP_1680	Bottom profile length 1680
3	SEK-BTP_2040	Bottom profile length 2040
4	SEK-ABFL_10	Alu Base Front leg 10
5	SEK-ABFL_20	Alu Base Front leg 20
6	SEK-ABBL_10	Alu Base Back leg 10
7	SEK-ABBA_20	Alu Base Back annex 20
8	EM-CLA.E_35S.2	Clamp end EasyMount™ 35 mm Direct*
9	EM-CLA.E_35B.2	Clamp end EasyMount™ Black 35 mm Direct*
10	EM-CLA.M_40S.2	Clamp middle EasyMount™ Direct**
11	EM-CLA.M_40B.2	Clamp middle EasyMount™ Black Direct**
12	SEK-PT_6_12	Screw self-tapping 6.0 x 12 mm PT
13	SEK-PT_6_45	Screw self-tapping 6.0 x 45 mm PT
14	SEK-PT_6_50	Screw self-tapping 6.0 x 50 mm PT
15	SEK-PT_6_55	Screw self-tapping 6.0 x 55 mm PT
16	SEK-PT_6_60	Screw self-tapping 6.0 x 60 mm PT
17	SEK-WD10_175	Wind deflector 10
18	SEK-WD10_210	Wind deflector 10, 2100 mm
19	SEK-WD10_217	Wind deflector 10, 2170 mm
20	SEK-WD20_175	Wind deflector 20
21	SEK-WD20_210	Wind deflector 20, 2100 mm
22	SEK-WD20_217	Wind deflector 20, 2170 mm
23	SEK-JF3_48_19	Screw self-drilling 4.8 x 19 mm JF3 - 2
24	SEK-PREPDM	EPDM protective rubber 300 mm
25	SEK-EMBP	Ballast pan EasyMount™
26	SEK-LOAD_CP15	Load Concrete plate 40/40/3.8 cm (13.5 kg)
27	SEK-LOAD_CP36	Load Concrete plate 50/50/3.8 cm (21 kg)

*For colour and dimension options see Accessories, components 26–33.

**For colour and dimension options see Accessories, component 41–42.

Did you know?

▶ The system can be additionally upgraded with protective rubber mats which ensure that the roof is damage free.

System components

The rubber shields the roof membrane from penetrations during installation, thermal expansions, contractions and vibrations. Extra 8 mm rise absorbs the roof unevenness.

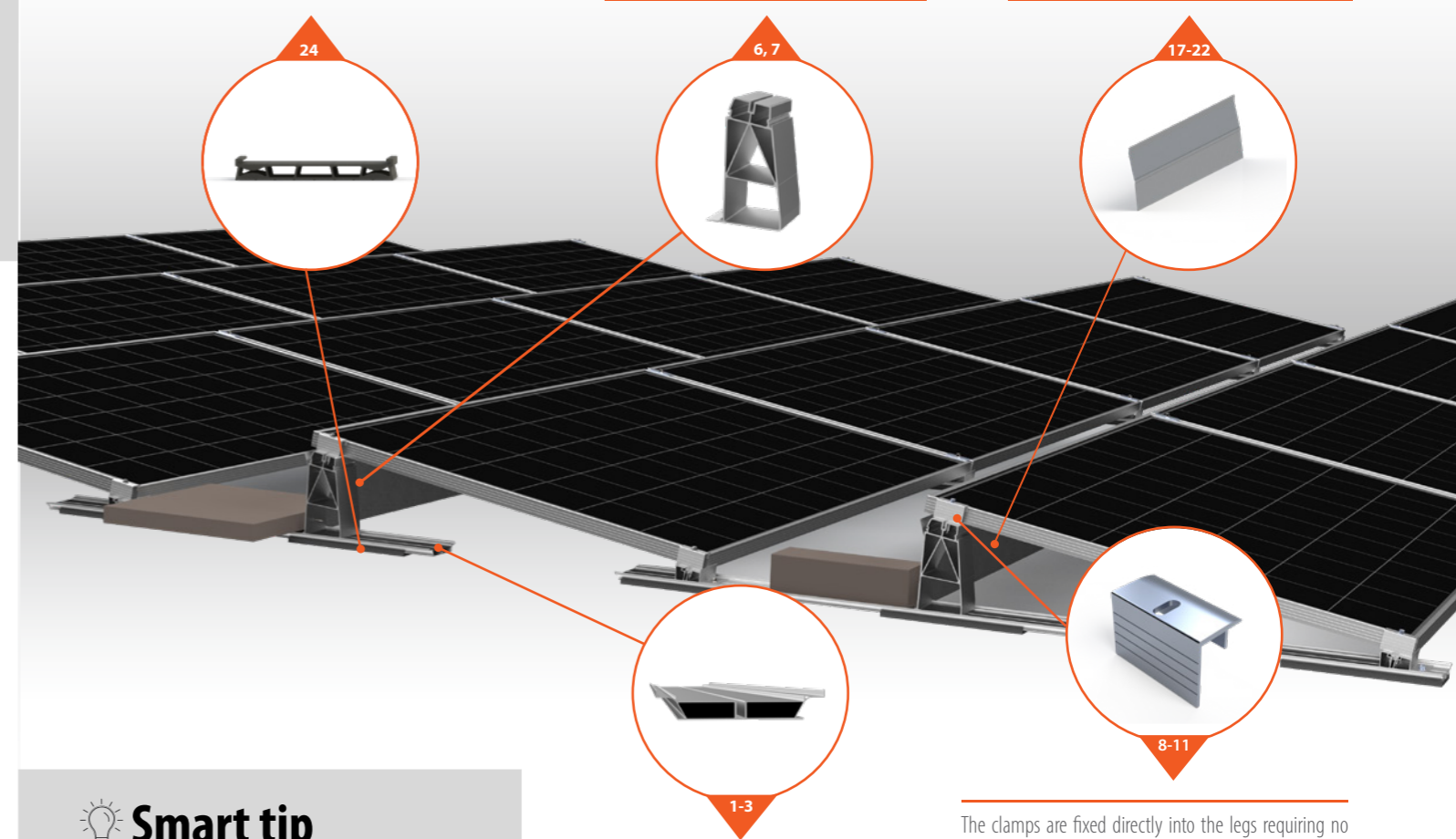
Back leg and snap-on annex enable high load-bearing capacities and easy adaptation to 20° or an east-west installation.

The wind deflectors improve the aerodynamics of the system resulting in less required additional ballast which lead to shorter labor times and reduced stress to the building.

SEK-PREPDM EPDM protective rubber 300 mm

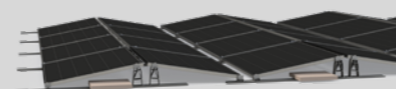
SEK-ABBL_10 ALU Base back leg 10
SEK-ABBA_20 ALU Base back annex 20

SEK-WD10_175 Wind deflector 10
SEK-WD10_210 Wind deflector 10, 2100 mm
SEK-WD20_175 Wind deflector 20
SEK-WD20_210 Wind deflector 20, 2100 mm
SEK-WD10_217 Wind deflector 10, 2170 mm
SEK-WD20_217 Wind deflector 20, 2170 mm



Smart tip

Use Twin Slim BASE for east-west orientation using the same universal components.



The bottom profiles have the load-bearing capacity to carry the entire system loads and safely transfer them to the roof surface.

SEK-BTP_1020 Bottom profile length 1020
SEK-BTP_1680 Bottom profile length 1680
SEK-BTP_2040 Bottom profile length 2040

The clamps are fixed directly into the legs requiring no end nut due to its self-tapping design. They can only get untwined with a tool so they offer long-term safety and stability.

EM-CLA.E_35S.2 Clamp end EasyMount™ 35 mm Direct
EM-CLA.E_35B.2 Clamp end EasyMount™ Black 35 mm Direct
EM-CLA.M_40S.2 Clamp middle EasyMount™ 35 mm Direct
EM-CLA.M_40B.2 Clamp middle EasyMount™ Black Direct



Fits most PV modules



Adjustable distance between rows



Cost-effective solution



South-facing or east-west orientation



10-year product guarantee